



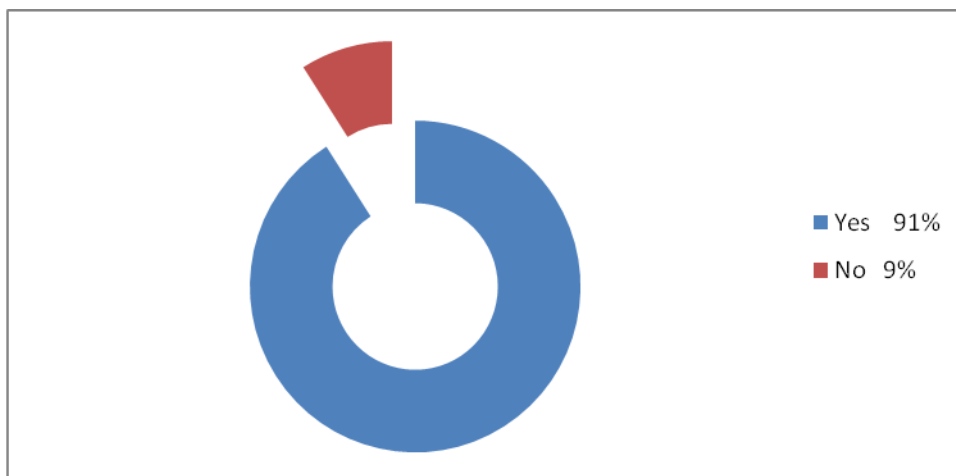
MALLA REDDY ENGINEERING COLLEGE (Autonomous)

Student Satisfaction Survey on Teaching Learning Process

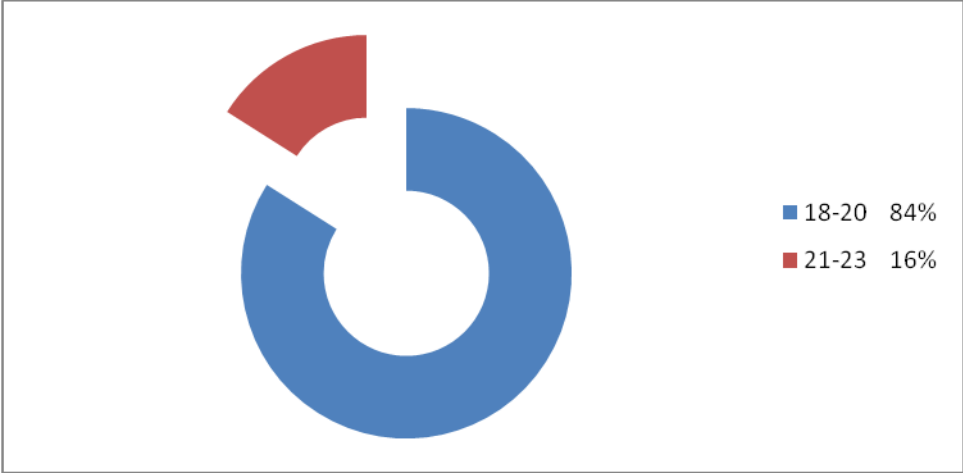
Academic Year 2019 – 2020

Following are the questions for online student satisfaction survey from 3,690 students with regard to teaching learning process.

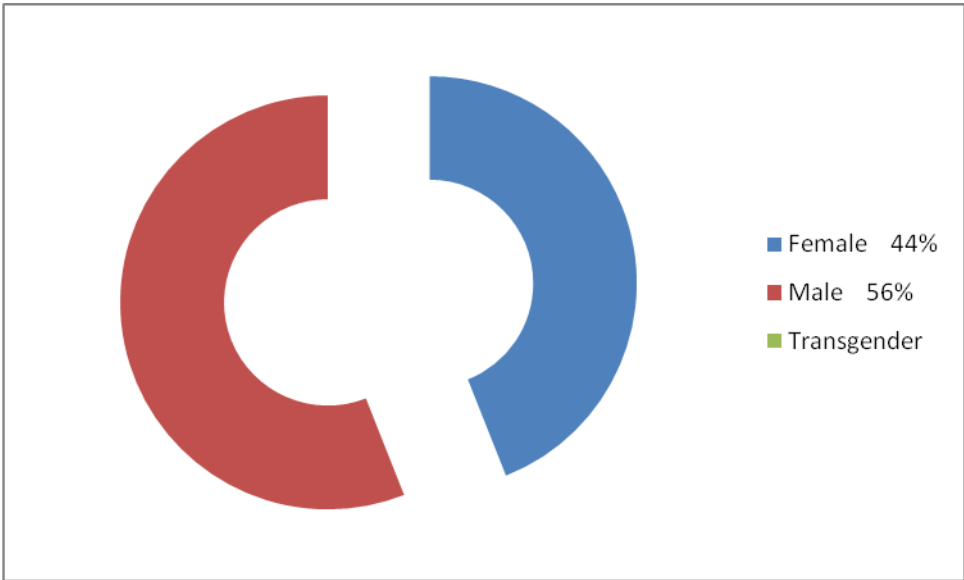
Question A	Particulars	Frequency	Percent
Please confirm this is the first and only time you answer this survey	Yes	3339	91
	No	351	09
	Total	3690	100



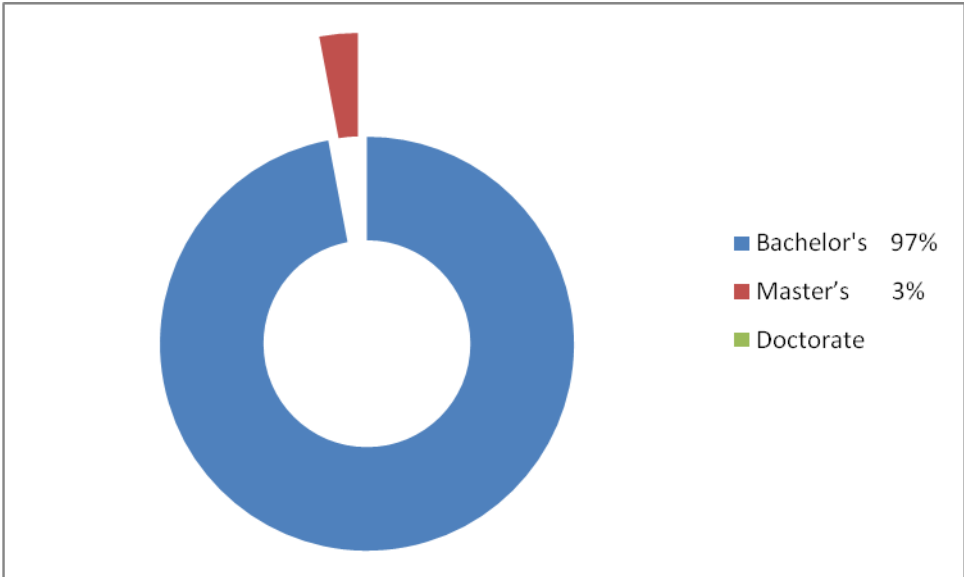
Question B	Particulars	Frequency	Percent
Age	18-20	3105	84
	21-23	585	16
	Total	3690	100



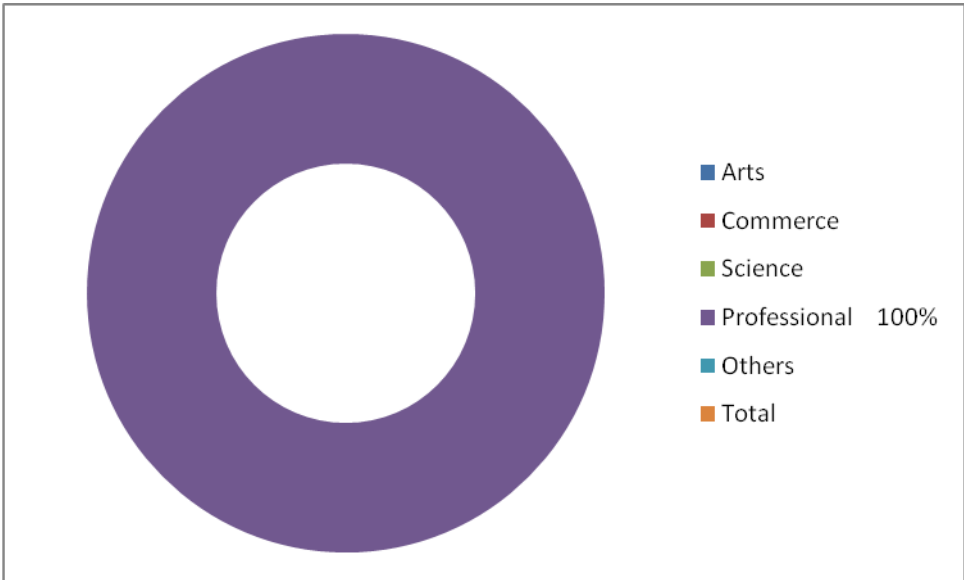
Question C	Particulars	Frequency	Percent
Gender	Female	1620	44
	Male	2070	56
	Transgender	0	0
	Total	3690	100



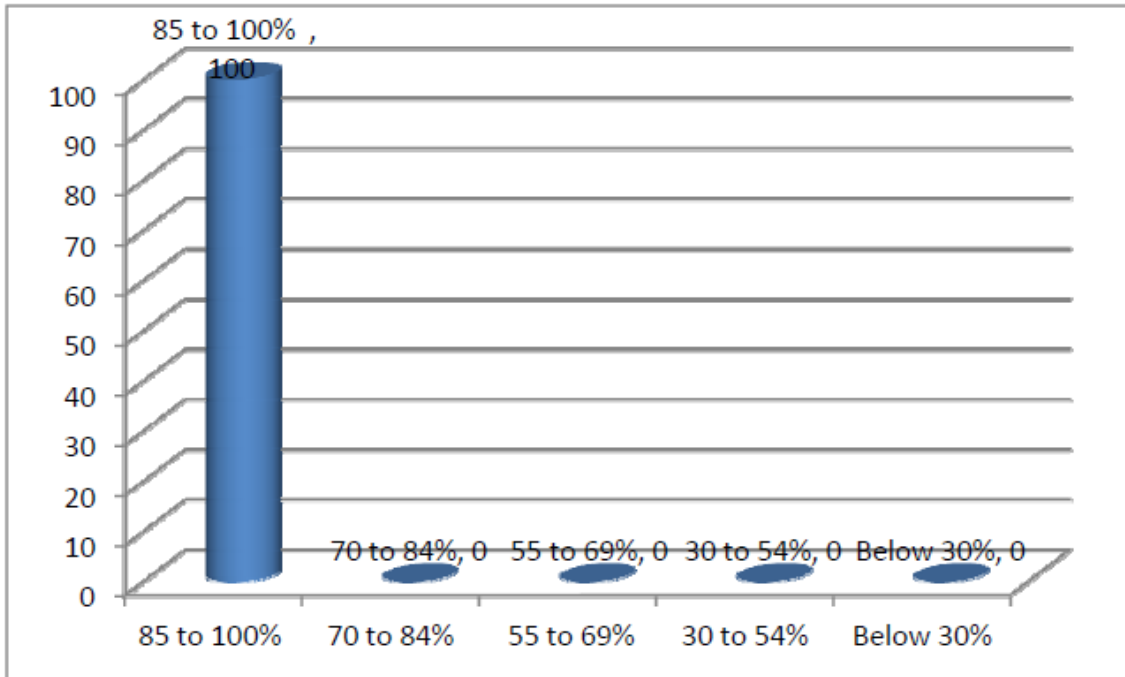
Question D	Particulars	Frequency	Percent
What degree program are you pursuing	Bachelor's	3591	97
	Master's	99	03
	Doctorate	0	0
	Total	3690	100



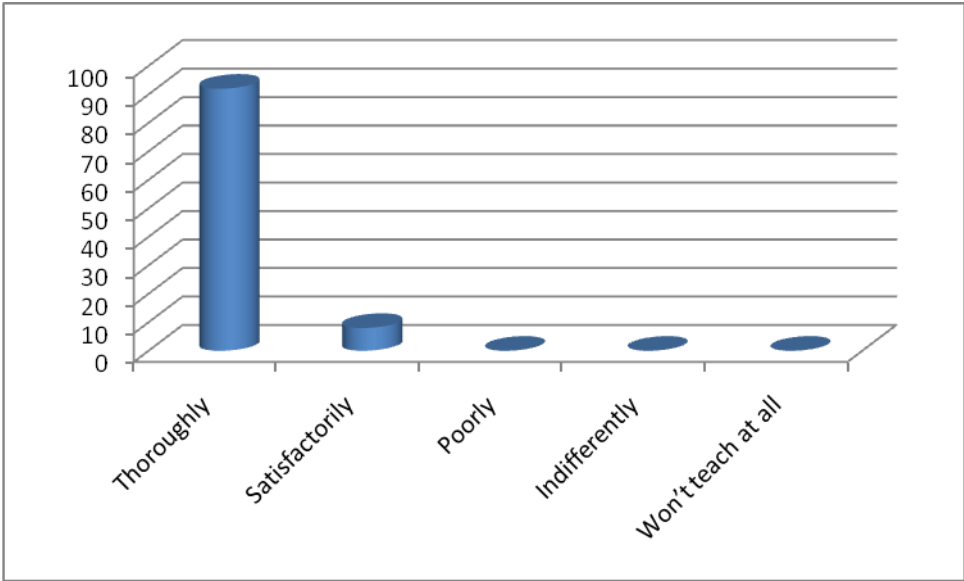
Question E	Particulars	Frequency	Percent
What subject area are you currently pursuing	Arts	0	0
	Commerce	0	0
	Science	0	0
	Professional	3690	100
	Others	0	0
	Total	3690	100



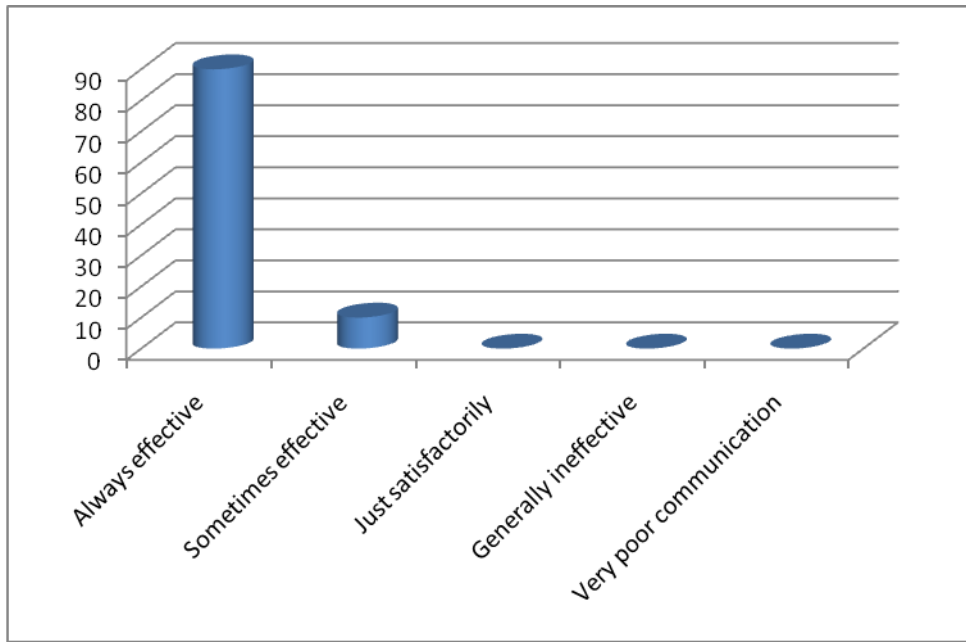
Question1	Particulars	Percent
How much of the syllabus was covered in the class?	85to100%	100
	70to84%	0
	55to69%	0
	30to54%	0
	Below30%	0
	Total	100



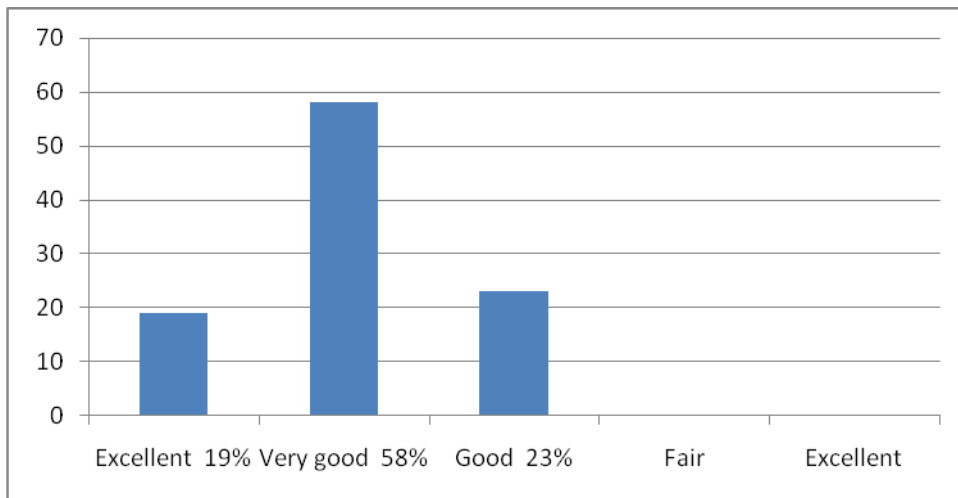
Question 2	Particulars	Percent
How well did the teachers prepare for the classes?	Thoroughly	92
	Satisfactorily	08
	Poorly	0
	Indifferently	0
	Won't teach at all	0
	Total	100



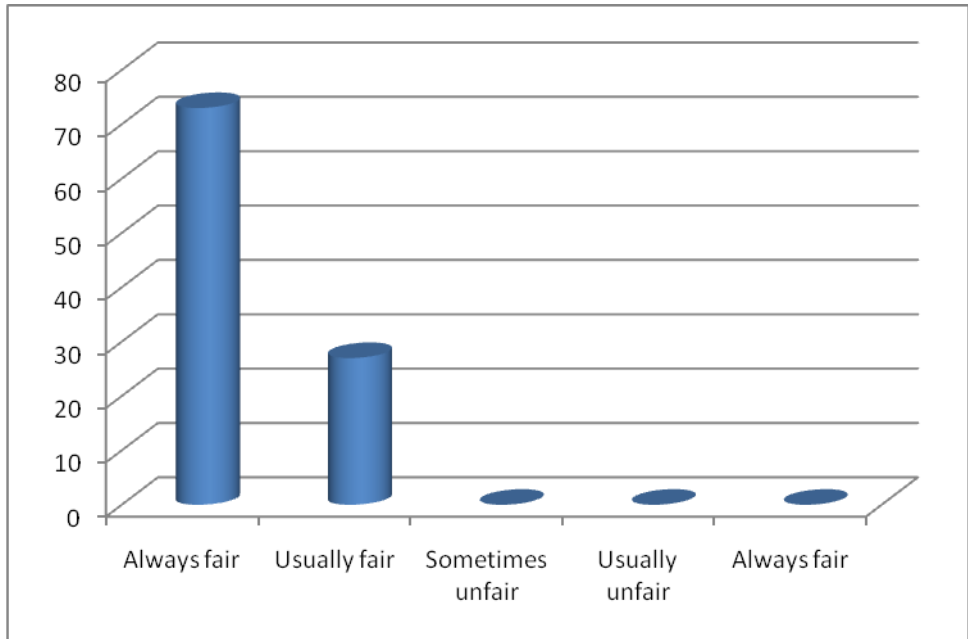
Question 3	Particulars	Percent
How well were the teachers able to communicate?	Always effective	92
	Sometimes effective	08
	Just satisfactorily	0
	Generally ineffective	0
	Very poor communication	0
	Total	100



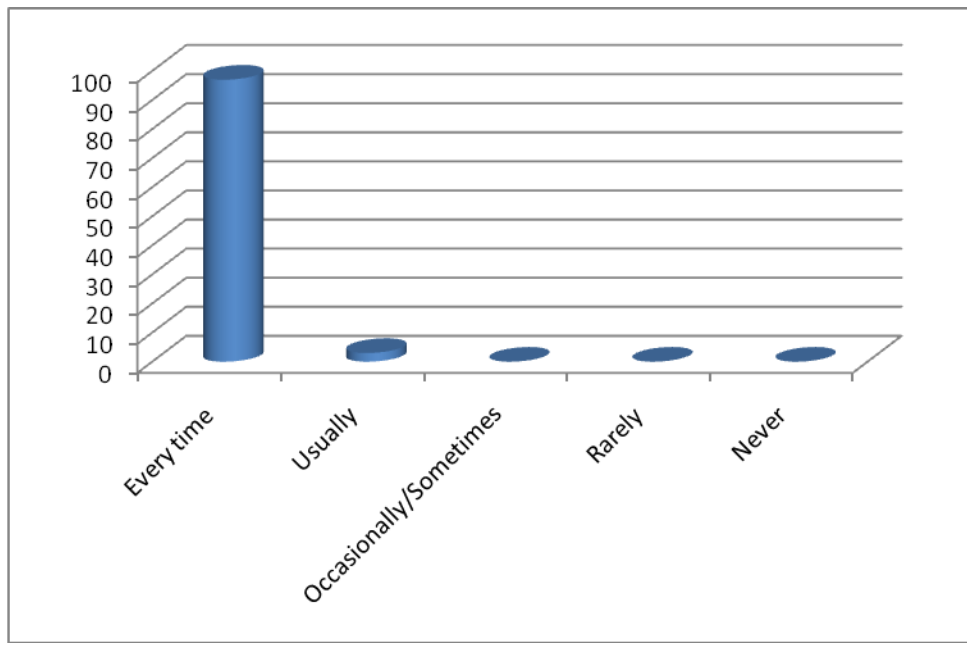
Question 4	Particulars	Percent
The teacher's approach to teaching can best be described as	Excellent	19
	Very good	58
	Good	23
	Fair	0
	Excellent	0
	Total	100



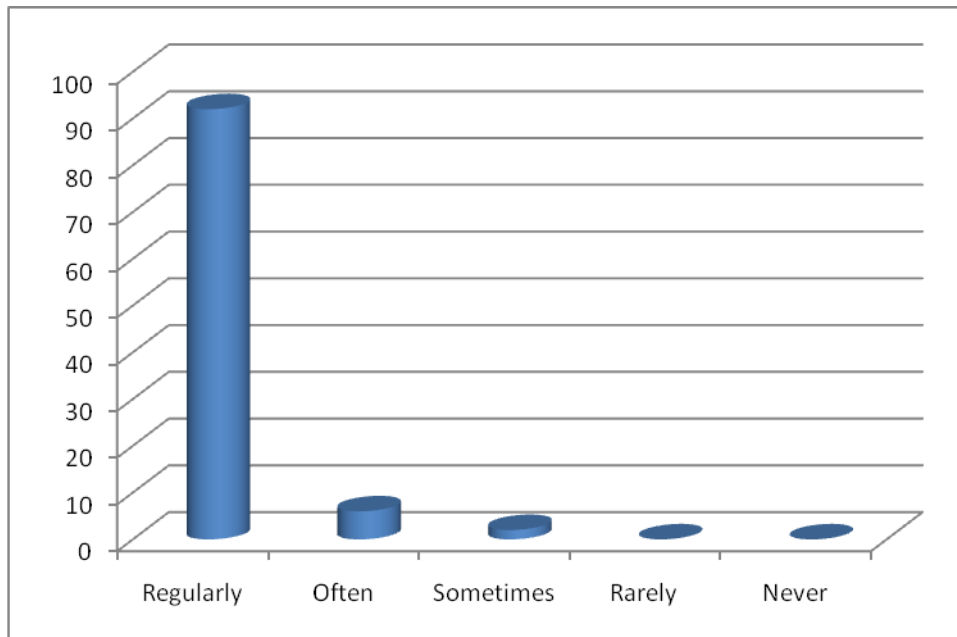
Question 5	Particulars	Percent
Fairness of the internal evaluation process by the teachers.	Always fair	63
	Usually fair	37
	Sometimes unfair	0
	Usually unfair	0
	Always fair	0
	Total	100



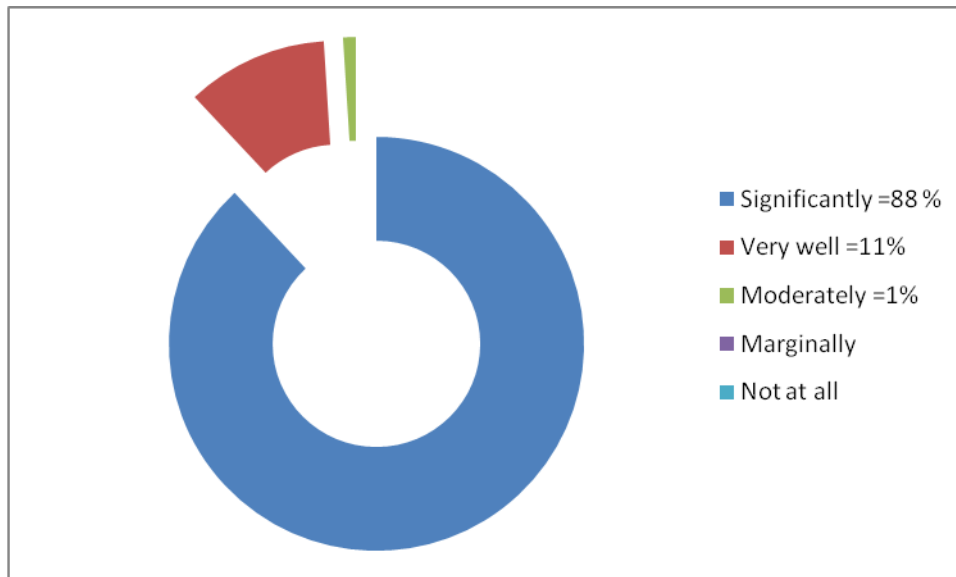
Question 6	Particulars	Percent
Was your performance in assignments discussed with you?	Every time	97
	Usually	3
	Occasionally/Sometimes	0
	Rarely	0
	Never	0
	Total	0



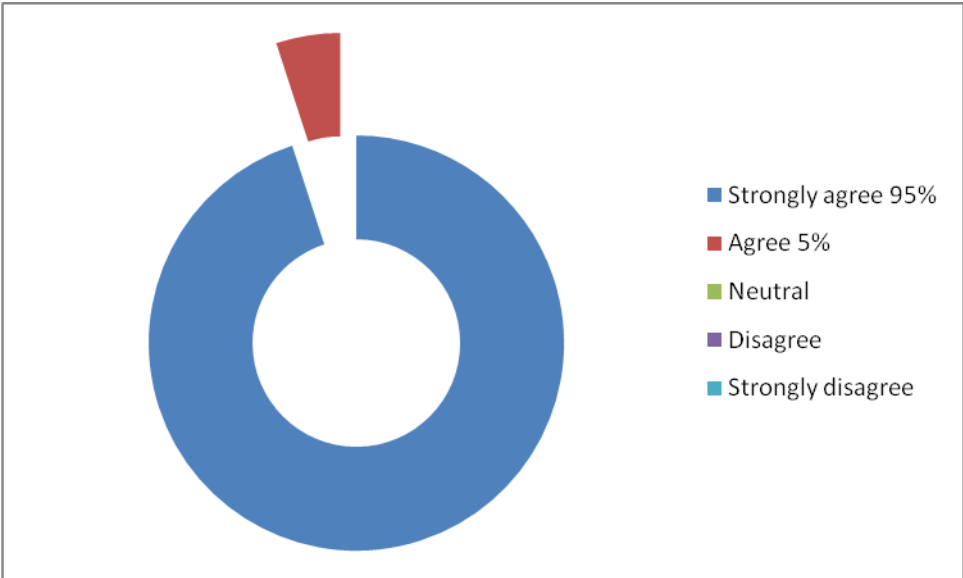
Question7	Particulars	Percent
The institute takes active interest in promoting internship, student exchange, field visit opportunities for students.	Regularly	92
	Often	06
	Sometimes	2
	Rarely	0
	Never	0
	Total	100



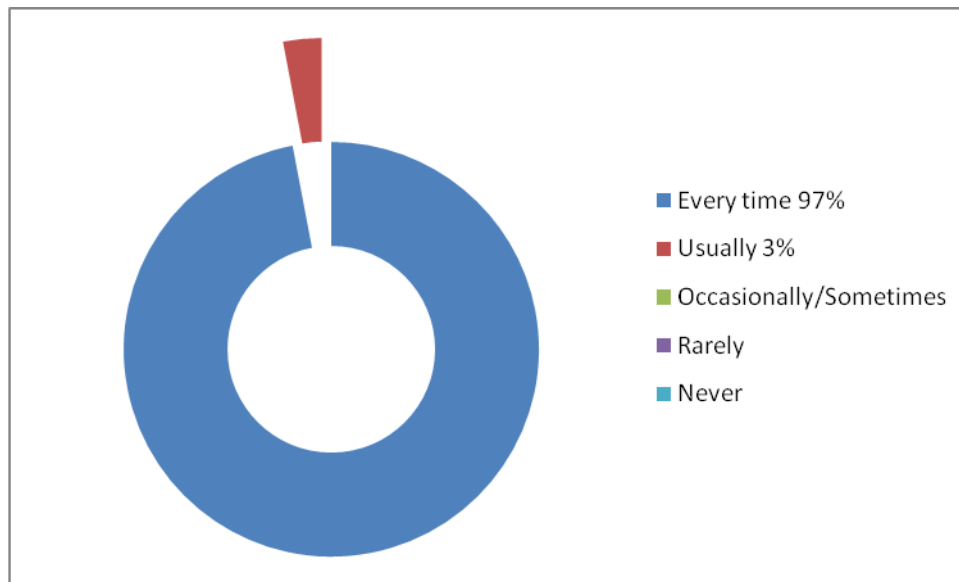
Question 8	Particulars	Percent
The teaching and mentoring process in your institution facilitates you in cognitive, social and emotional growth.	Significantly	88
	Very well	11
	Moderately	1
	Marginally	0
	Not at all	0
	Total	100



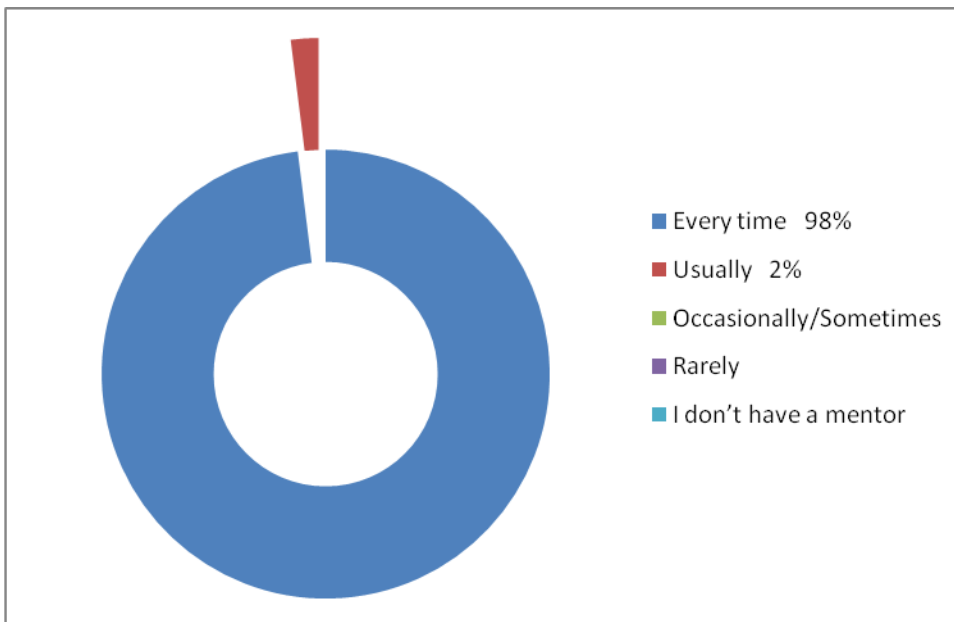
Question 9	Particulars	Percent
The institution provides multiple opportunities to learn and grow.	Strongly agree	85
	Agree	15
	Neutral	0
	Disagree	0
	Strongly disagree	0
	Total	100



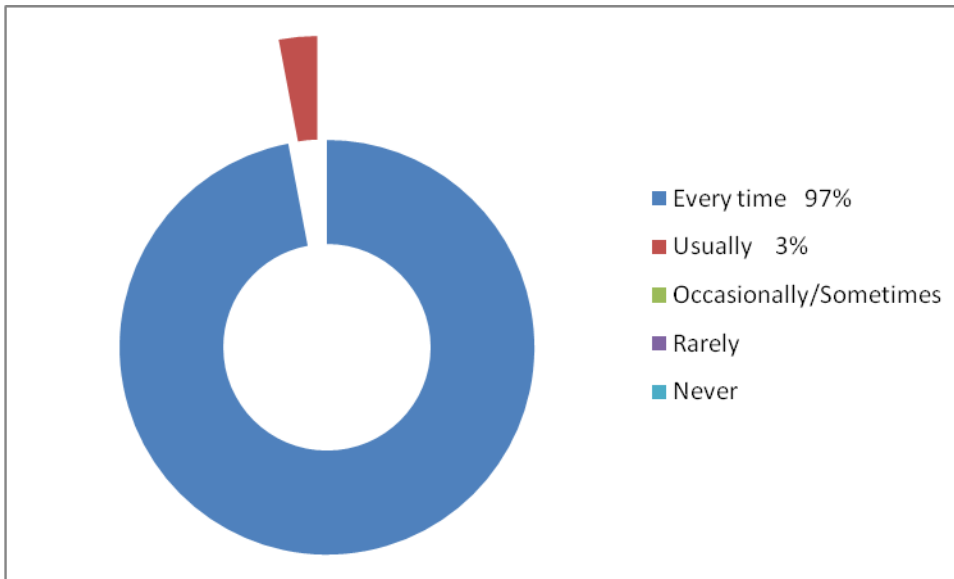
Question10	Particulars	Percent
Teachers inform you about your expected competencies, course outcomes and programme outcomes.	Every time	97
	Usually	3
	Occasionally/Sometimes	0
	Rarely	0
	Never	0
	Total	100



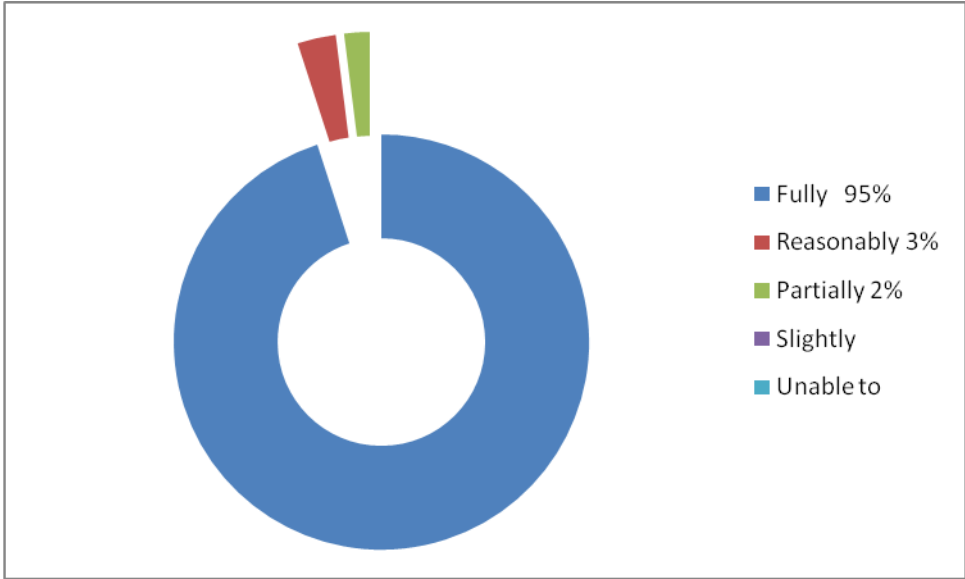
Question 11	Particulars	Percent
Your mentor does a necessary follow-up with an assigned task to you.	Every time	98
	Usually	2
	Occasionally/Sometimes	0
	Rarely	0
	I don't have a mentor	0
	Total	100



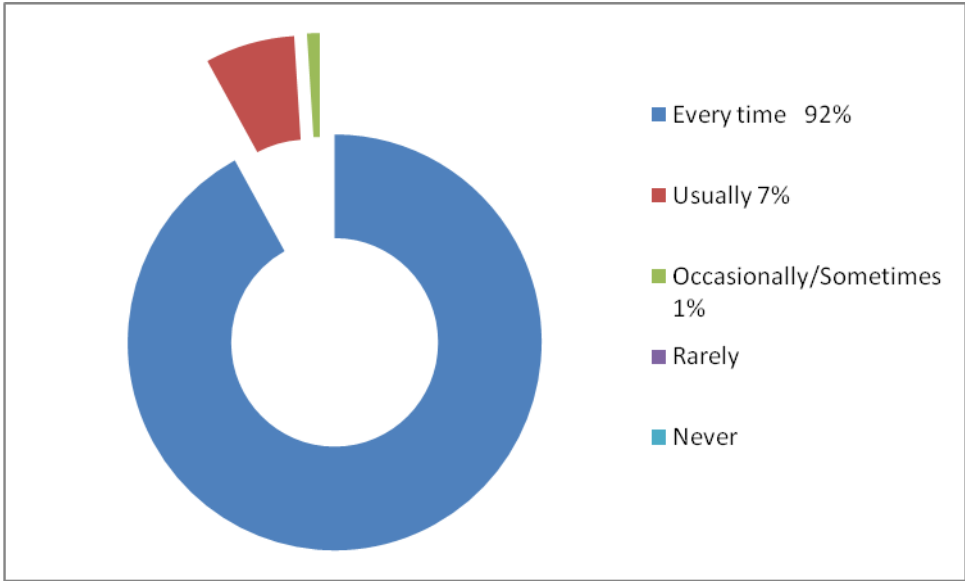
Question 12	Particulars	Percent
The teachers illustrate the concepts through examples and applications.	Every time	97
	Usually	3
	Occasionally/Sometimes	0
	Rarely	0
	Never	0
	Total	100



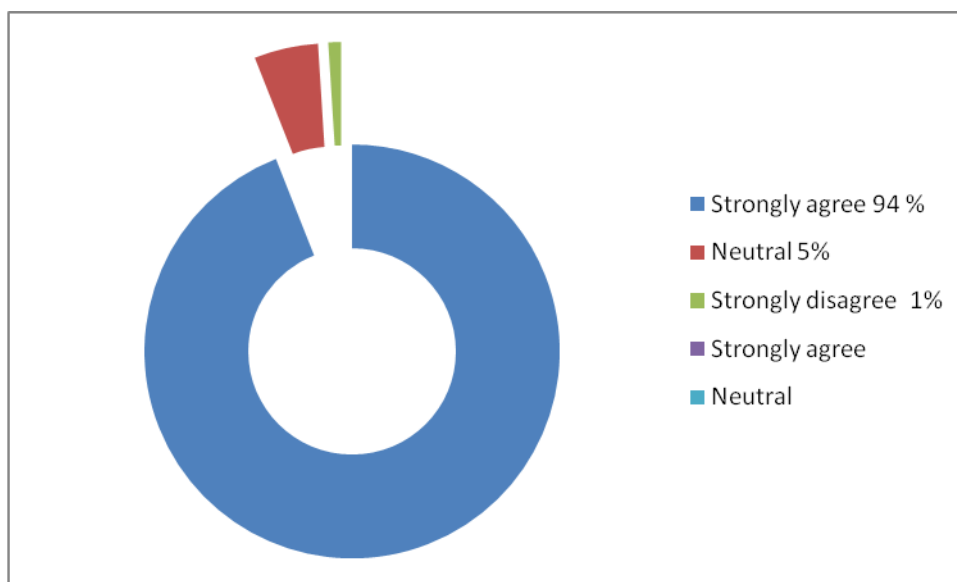
Question 13	Particulars	Percent
The teachers identify your strengths and encourage you with providing right level of challenges.	Fully	95
	Reasonably	3
	Partially	2
	Slightly	0
	Unable to	0
	Total	100



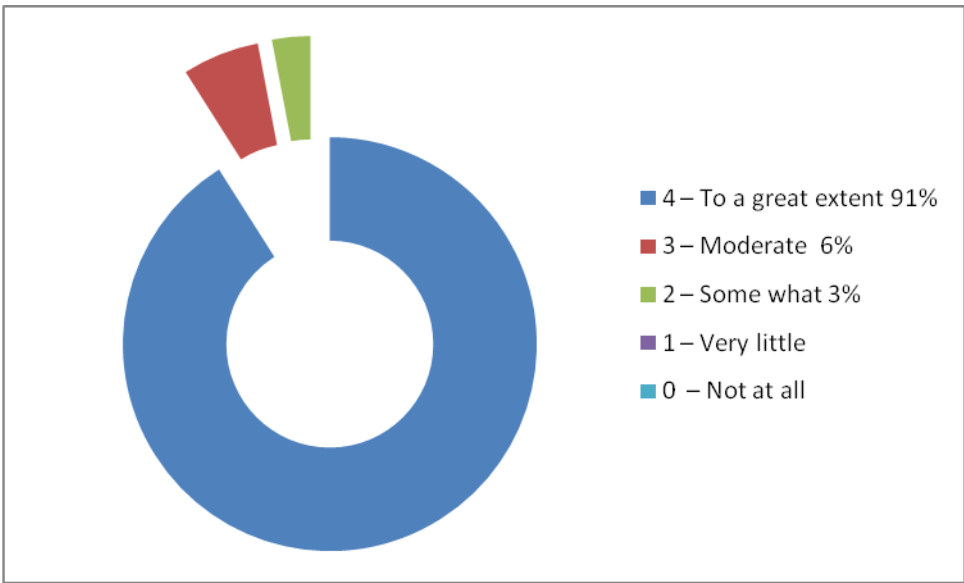
Question 14	Particulars	Percent
Teachers are able to identify your weaknesses and help you to overcome them.	Every time	92
	Usually	7
	Occasionally/Sometimes	1
	Rarely	0
	Never	0
	Total	100



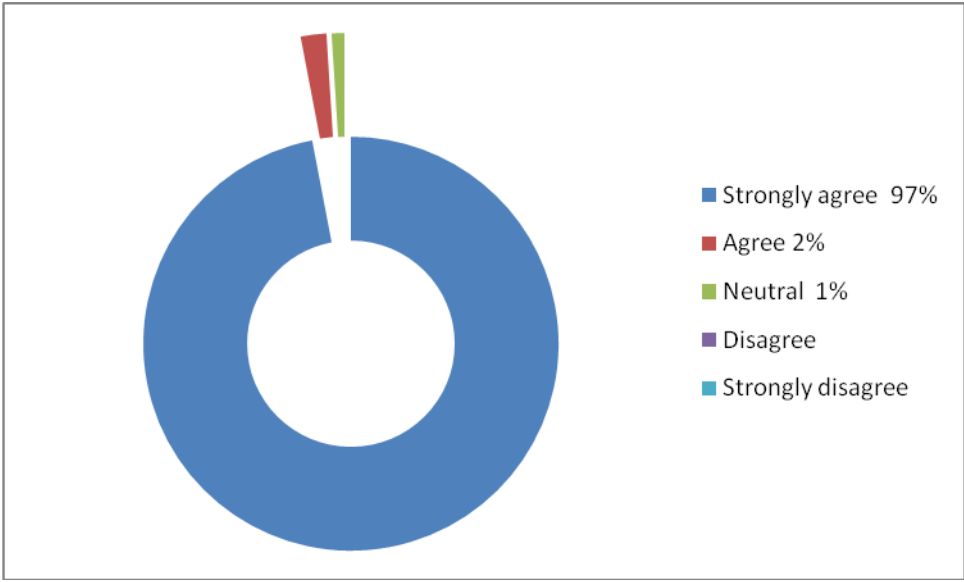
Question 15	Particulars	Percent
The institution makes effort to engage students in the monitoring, review and continuous quality improvement of the teaching Learning process.	Strongly agree	94
	Neutral	5
	Strongly disagree	1
	Strongly agree	0
	Neutral	0
	Total	100



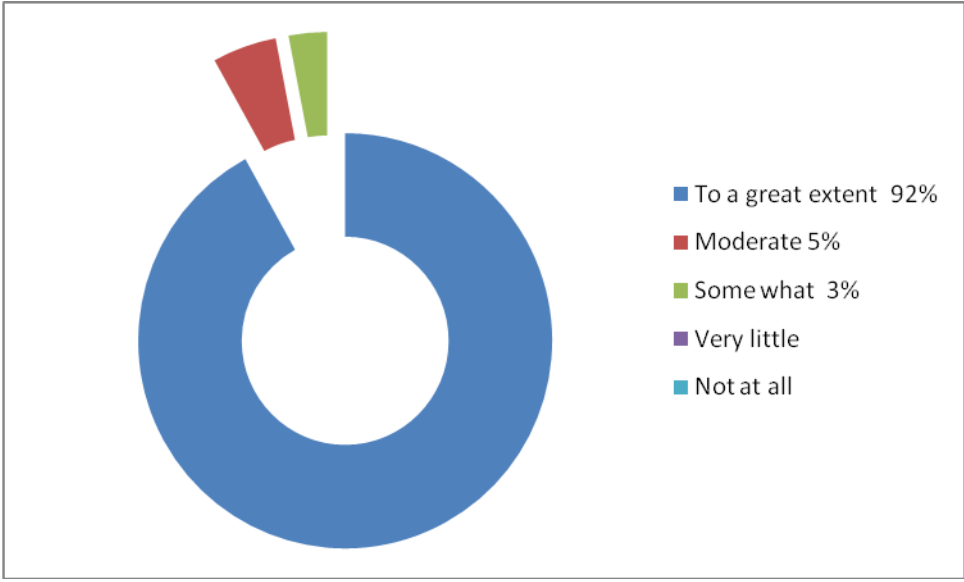
Question 16	Particulars	Percent
The institute/ teachers use student centric methods, such as experiential learning, participative learning and problem solving Methodologies for enhancing learning experiences.	4 – To a great extent	91
	3 – Moderate	6
	2 – Some what	3
	1 – Very little	0
	0 – Not at all	0
	Total	100



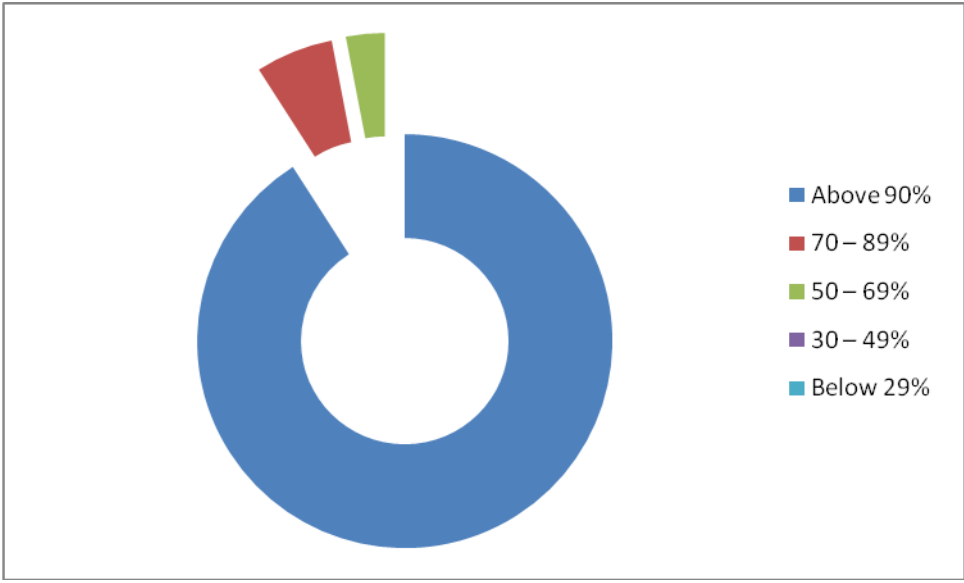
Question 17	Particulars	Percent
Teachers encourage you to participate in extracurricular Activities.	Strongly agree	97
	Agree	2
	Neutral	1
	Disagree	0
	Strongly disagree	0
	Total	100



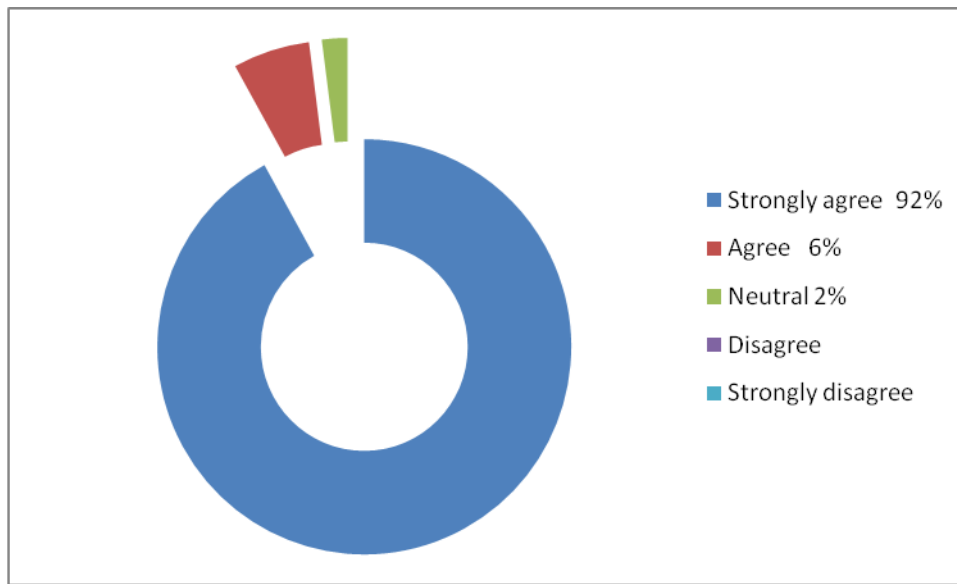
Question 18	Particulars	Percent
Efforts are made by the institute/ teachers to inculcate soft skills, life skills and employability skills to make you ready for the world of work	To a great extent	92
	Moderate	5
	Some what	3
	Very little	0
	Not at all	0
	Total	100



Question 19	Particulars	Percent
What percentage of teachers use ICT tools such as LCD Projector, Multimedia, etc. While teaching.	Above 90%	90
	70 – 89%	6
	50 – 69%	3
	30 – 49%	0
	Below 29%	0
	Total	100



Question 20	Particulars	Percent
The overall quality of teaching-learning process in your institute is very good.	Strongly agree	92
	Agree	6
	Neutral	2
	Disagree	0
	Strongly disagree	0
	Total	100



Conclusion

1. How much of the syllabus was covered in the class shows 85 to 100% (100 %)
2. How well did the teachers prepare for the classes shows Thoroughly (92%) and Satisfactorily (8 %)
3. How well were the teachers able to communicate shows Always effective(92%) and 8% Says Satisfactorily
4. The teacher's approach to teaching can best be described as shows Excellent(19 %) , Very good (58%) and good (23%)
5. Fairness of the internal evaluation process by the teachers shows Always fair (63%) and Usually fair (37%).
6. Was your performance in assignments discussed with you shows 97 % by Every time and 3% Usually
7. The institute takes active interest in promoting internship, student exchange, field visit opportunities for students shows Regularly (92%), Often (6%) and Sometimes(3%).
8. The teaching and mentoring process in your institution facilitates you in cognitive, social and emotional growth shows Significantly (88%), Very well (11%) and Moderately (1%)
9. The institution provides multiple opportunities to learn and grow shows Strongly agree(85%), Agree (15%).
10. Teachers inform you about your expected competencies, course outcomes and programme outcomes shows Every time (97%) and Usually (3%).
11. Your mentor does a necessary follow-up with an assigned task to you shows every time (98%) and Usually (2%).
12. The teachers illustrate the concepts through examples and applications shows every time (97%) and Usually (3%).
13. The teachers identify your strengths and encourage you with providing right level of challenges shows fully (95%) , Reasonably (3%) Partially (2%).
14. Teachers are able to identify your weaknesses and help you to overcome them shows every time (92%), Usually (7%) and Occasionally/Sometimes (1%).
15. The institution makes effort to engage students in the monitoring, review and continuous quality improvement of the teaching learning process shows – Strongly agree (94%), Agree (5%) and Neutral (1%).

- 16. The institute/ teachers use student centric methods, such as experiential learning, participative learning and problem solving methodologies for enhancing learning experiences shows To a great extent (91%), Moderate(6%) and somewhat (3%).**
- 17. Teachers encourage you to participate in extracurricular activities shows Strongly agree (97%), Agree (2%) and Neutral (1%).**
- 18. Efforts are made by the institute/ teachers to inculcate soft skills, life skills and employability skills to make you ready for the world of work shows To a great extent (92%), Moderate (5%) and Some what (3%).**
- 19. What percentage of teachers use ICT tools such as LCD projector, Multimedia, etc. while teaching shows Above 90% (90%), 70 – 89%(6%)and 50 – 69% (3%).**
- 20. The overall quality of teaching-learning process in your institute is very good shows Strongly agree (92%), Agree (6%) and neutral (2%).**
- 21. Give three observation / suggestions to improve the overall teaching – learning experience in your institution.**
(Below are summarized suggestions from 3,690 responses.)
- **More practical examples should be discussed in class.**
 - **Field trips should be organized for certain topics.**
 - **There should be increased use of ICT tools in teaching.**
 - **Case study should be discussed in the class.**
 - **Current affairs related to various topics should be discussed.**
 - **More career guidance sessions should be organized.**